



KONICA MINOLTA

AccurioLabel 230

# YOU WANT PROFITABLE LABEL PRODUCTION IN SMALL BATCHES.

RETHINK LABEL PRINTING



Giving Shape to Ideas

A digital label printing system that offers enhanced productivity, job flexibility, operability and excellent image quality with affordable system cost, is a “Perfect Fit” for business expansion and parallel use with existing analogue presses.

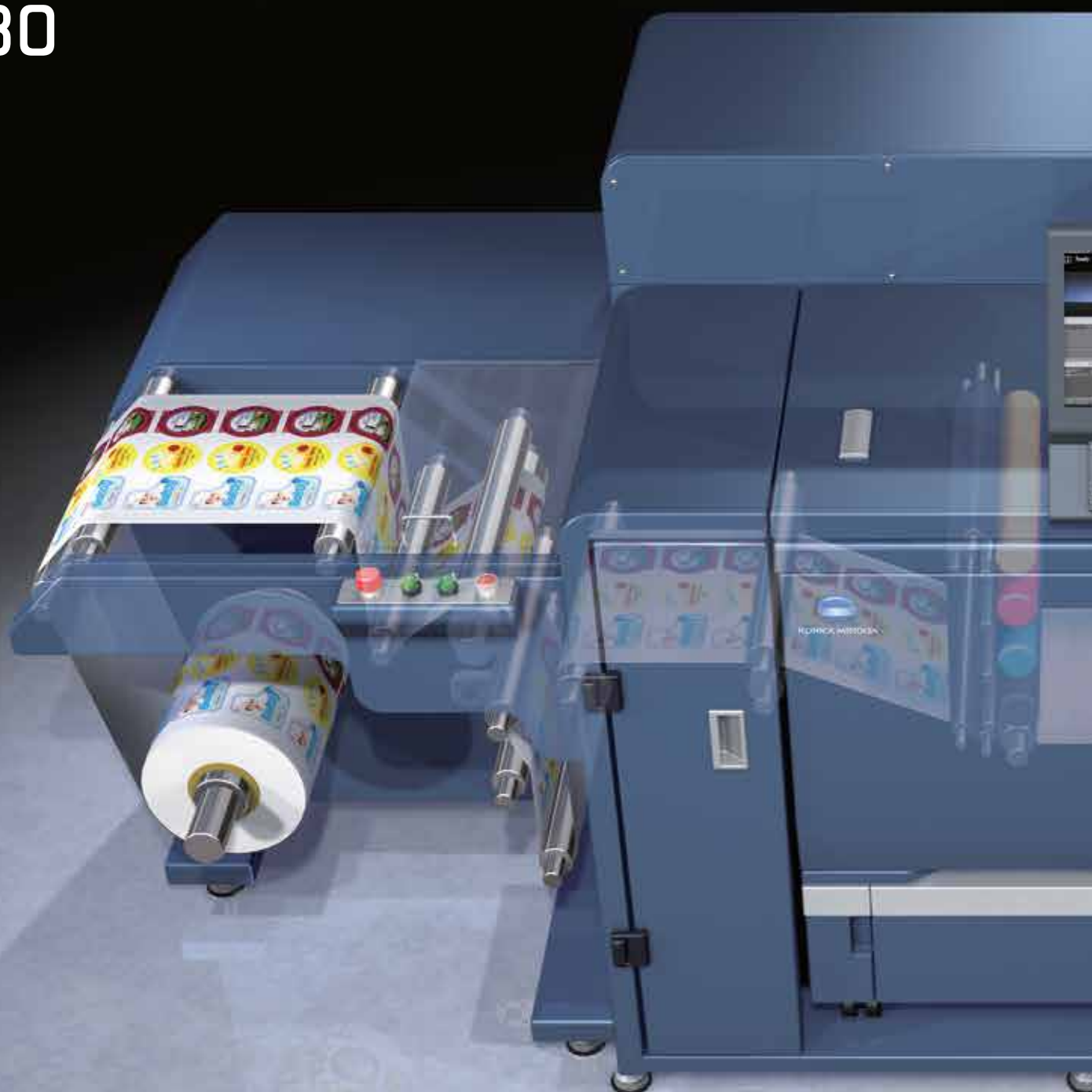
# AccurioLabel 230

QUALITY

FLEXIBILITY

Perfect Fit

PRODUCTIVITY



## High performance in compact system

- High productivity with maximum print speed of 23.4 m/min.
- Excellent image quality to meet a wide range of diversifying needs.
- Wide media compatibility without pre-treatment.
- Small foot print.
- Outstanding operability.
- Sophisticated colour management features.
- Superb colour stability.



# Digital Label Printing

## Merits of introducing digital printing

Print jobs of various kinds and short-run jobs are increasing compared to long-run jobs of the past and printers are required to cope with orders with a quick turnaround. Taking advantage of the flexibility of digital printing, these orders that are difficult to handle with analogue printing press can now be handled efficiently. In addition, values can be added to the print product using VDP or numbering, which helps differentiate the user among ever-diversifying market needs.

### Difficulties with analogue press

Preparatory work including colour adjustment and ink cleaning, etc. is required.

- 1 ▶ Printing plate needs to be changed for each print job.
- 2 ▶ Substantial print wastage results from trial print run. (especially roll-fed press.)
- 3 ▶ Expertise and skillful operator are required.

### Merits of digital press

Print data can be directly output from PC

- 1 ▶ Preparatory work only such as paper replacement or colour adjustment can be performed as required.
- 2 ▶ Stable quality is ensured from the first sheet of the job onwards, reducing print wastage.
- 3 ▶ Simply follow the output or maintenance instructions displayed on the screen.

**Digital Label Printer AccurioLabel 230 with its superb productivity, image quality and operability as well as its economical features is ideal for those wishing gain a foothold in the label market and requiring parallel use with existing analogue presses.**

### Digital printing applications

Small lot label printing

Label for local products

Label design sample printing

Label for event or special occasion

Label with variable data printing

Personalised label





## Applications realised by AccurioLabel 230 to meet a wide range of diversifying needs.

### Thin line expression

Thin lines in complex line images are also faithfully reproduced by the edge treatment function.



### Solid density

Solid black areas with high image density can be expressed with a suitable glossy appearance.

### Photographic image quality

Realisation of stable, high image quality by multi-gradation data processing and an expansive colour gamut.

### Gradients

Abundance of gradation expressions to achieve a natural finish.

### Variable data printing

Content can be changed for each sheet, effective for lot number changes or creation of original labels, for example.



### Barcode printing

Small barcodes can also be printed without blurring. Variable barcodes can also be printed.

### Small point characters

Small characters are also vividly printed to ensure ease of reading.

### Reproduction of skin-tone

Roughness of the skin can be suppressed to reproduce richly-textured human skin tones.



# Enhanced Productivity & Flexibility

To meet demands of digital printing business such as shorter turnaround and expansion of print application, AccurioLabel 230 improves overall productivity and job acceptability especially overprinting capability on pre-printed transparency or coloured media.

Enhanced productivity

## Fast print speed up to 23.4m/min.

Most of tack papers and tack films can be printed with the maximum print speed of 23.4m/min. The print speed enhanced from previous model realises faster turnaround time and contributes to expand the printing business.

Improved overall productivity

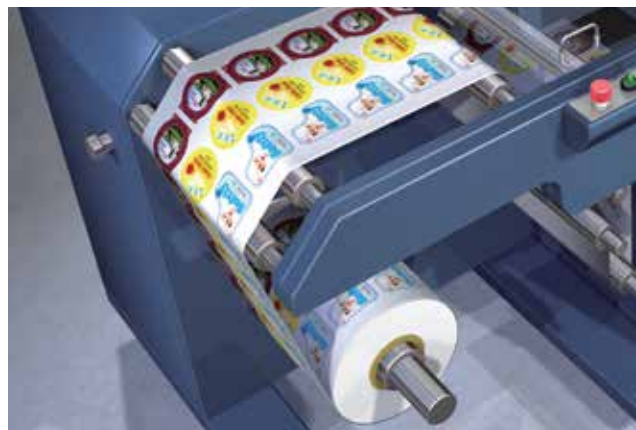
## Short warm-up time

Warming-up time from job to next job is minimised by no turning off of fusing unit. It not only improves overall production efficiency by the minimum job switching time, but also minimise the paper waste.

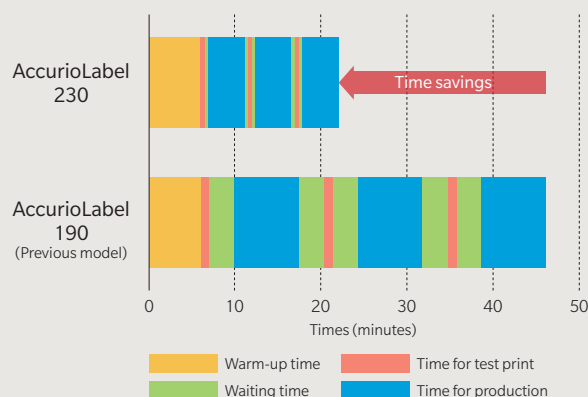
Extended run length

## Long continuous printing up to 1,000m

Accepting larger size production without switching time and paper losses. When the toner coverages is low, a print mode that adds colour belts on both sides of paper is available for the long length printing that supplies necessary amount of toner to keep the developer fresh. The colour belts are not necessary when the toner coverage is 3.5% or above.



■ Example of time saving (Printing for 100m x 3jobs)



By the enhanced productivity and shorter warm-up time of AccurioLabel 230 from previous model AccurioLabel 190, total production time is reduced to approximately half of that of AccurioLabel 190 in the case above. It contributes to realise shorter time delivery to customer and accepts more business.



Consideration of operability

## Mouse-compatible operation panel

The large 15-inch display adopted is easy to view and operate. The angle of the panel can be freely adjusted to suit the user and the easy-to-understand GUI and guide messages ensure high operability when making settings. A USB mouse can also be connected to improve operability.



Wider print application

## Wide media compatibility without pre-treatment

Thanks to digital toner HD<sup>E</sup> and Konica Minolta's low-temperature fixation technology, AccurioLabel 230 is compatible with a wide range of media including not only ordinary and matte paper, but also glossy paper, tack paper and film essential for label production. The user can not only select the ideal media to match applications but also print labels without the need for preprocessing.

### Label substrates

#### ■ Glossy or matte art paper

For foods or beverages locally produced and sundry goods such as event goods, mementos, etc.

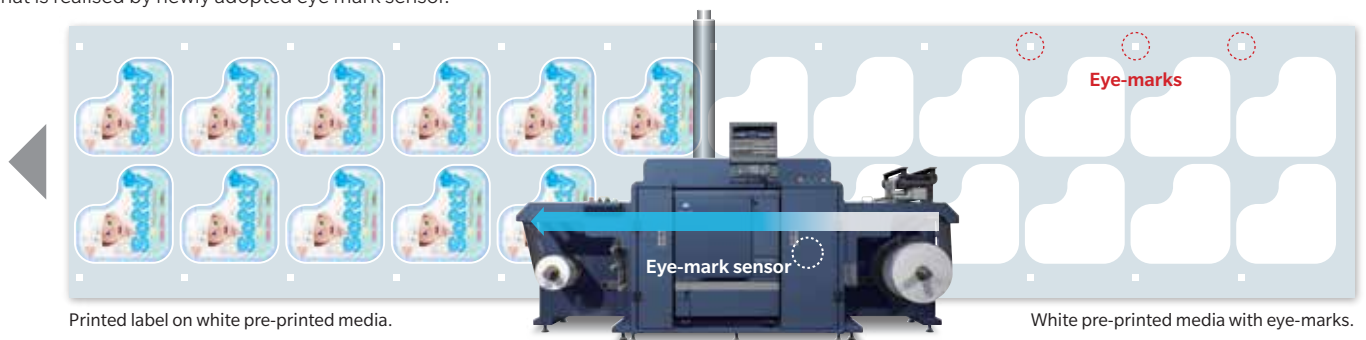
#### ■ YUPO®, PET, PP, etc.

For cosmetic, medical drugs, industrial products, beverages, etc.

Printing on transparency or coloured media

## Over printing capability with accurate registration

Over printing kit (Optional) is provided to enhance the usability. It enables digital 4-colour printing on pre-coated media with accurate registration that is realised by newly adopted eye mark sensor.



Printed label on white pre-printed media.

White pre-printed media with eye-marks.

Label printing without limitation of safety issue

## Food grade safe toner

The toners of AccurioLabel 230 are in compliance with FDA standards by the evaluation of the authorised organisation considering the safety of indirect food packaging label.

\*The FDA standard is stringent safety standards to the potential product that consumers are in contact with food, pharmaceutical and cosmetic by FDA (Food and Drug Administration).

Utilisation for other applications

## Banner printing capability

As well as store decoration and floor POP displays, the system can be used for long posters, signboards and an extensive range of other applications. The ability to offer promotional proposals with media mixes combined with labels also contributes to business expansion.



Up to 1,200mm long banner poster, POP, calendar, A3 horizontal book jacket, etc.



# Excellent & Consistent Quality

High image quality is realised by Konica Minolta's unique technology through faithfully facing the high-level needs in digital print market. Colour fluctuation is controlled within the minimum under various condition, which ensures stable and beautiful finish for the first through to the last prints. High image quality that brings higher value of printed material generates advantages for the print services.

Multi-gradation Data Processing at a high resolution

## High resolution

**3,600 (equivalent) × 1,200dpi × 8bits**

Combined with the reproductive capability of digital toner HD<sup>E</sup>, small characters and fine lines can be printed clearly and colour images beautifully output in rich gradations.

Cutting-edge image processing technology

## S.E.A.D. V

Enhanced Konica Minolta's Image processing technology S.E.A.D. V backed up with new generation of image processing ASIC and fully automated colour adjustment functions promise to provide print products with the best quality.



High quality with energy-saving

## Simitri HD<sup>E</sup> toner

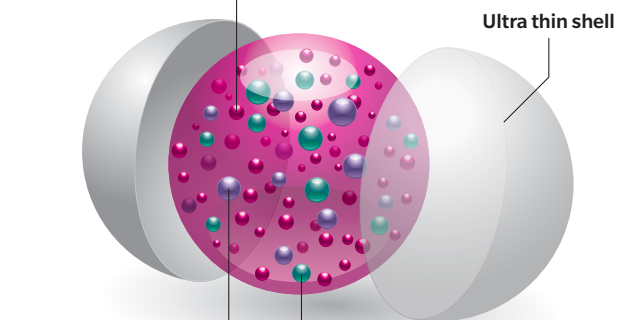
A 3D hybrid structure that contains functional polymers ensures a high level of compatibility with various types of media and enables realisation of ideal natural textures. In addition, it requires only a small amount of heat for fusing, significantly reducing power consumption.

### ■ 3-dimensional hybrid toner particles

#### ● Colourant

More accurate red, less colour fading, enhanced halftone and more natural skintones.

Ultra thin shell



#### ● Functional polymer

Higher image quality, reduced energy use and faster processing.

#### ● Sharp melt wax

Higher image quality and reduced energy use.



### ■ Blue Wool Test: The results according to ISO 105 B2 (lightfastness test).

Cyan 8 <sup>*1</sup>	Magenta 6-7	Yellow	Black 8 <sup>*1</sup>
-------------------------	----------------	--------	--------------------------

Remarks: The evaluation criteria is classified into 8 levels (1 to 8 levels), and the higher the value, the higher the lightfastness.

<sup>\*1</sup>: The test results indicate that the lightfastness of Cyan and Black toner is ranked as 8 or higher.

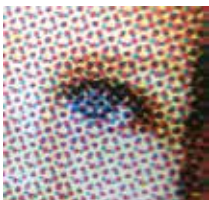




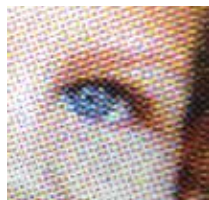
Selectable screens according to the application

## High quality screens

Equipped with a total of 12 types of screen, 6 dot screens, 3 line screens and 3 stochastic (FM) screens, the system can be matched to applications and purpose such as proof output, photograph printing and moire suppression.



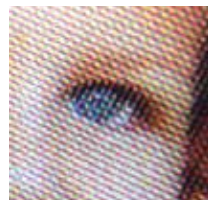
Rough screen  
Dot 130L



Standard screen  
Dot 190L



Fine screen  
Dot 270L



Line screen  
Line 180L

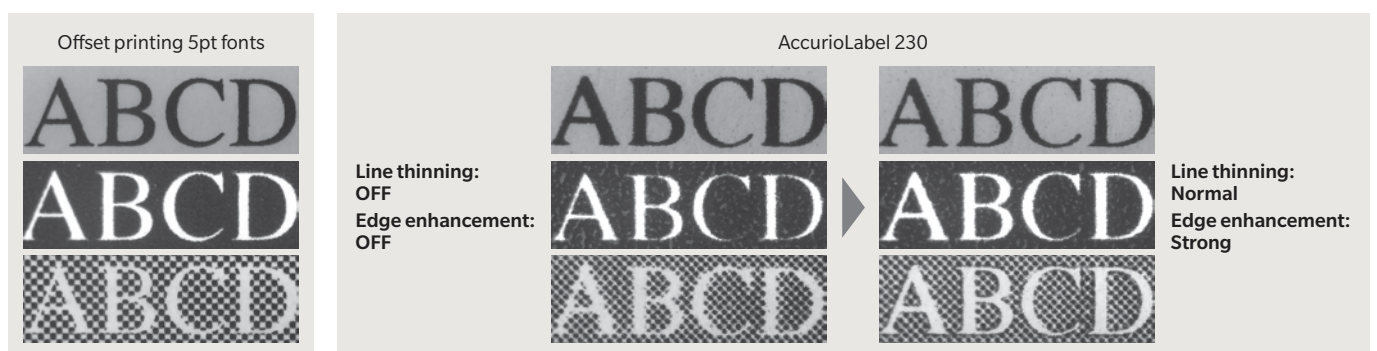


Stochastic screen  
FM-1

Superb small text & thin line quality

## Line thinning & edge enhancement technologies

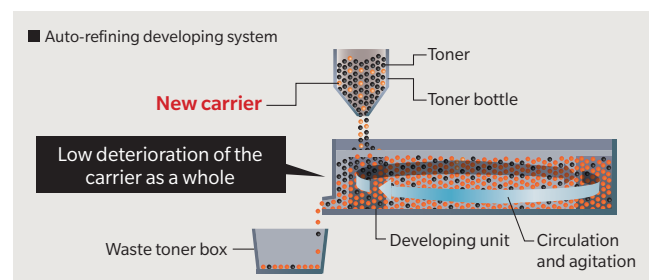
Furnished with a precise outline processing function that reduces blurring and streaking to realise high quality even for colour or outline characters. Characters on food or ingredients labels, for example that tend to be small, or barcodes can be printed clearly.



Stabilised developer

## Auto-refining developing system

A new carrier is supplied together with the toner to refresh the carrier in the developer, stabilising the developer condition to maintain high image quality throughout the system lifetime. The longer developer life also minimises downtime.



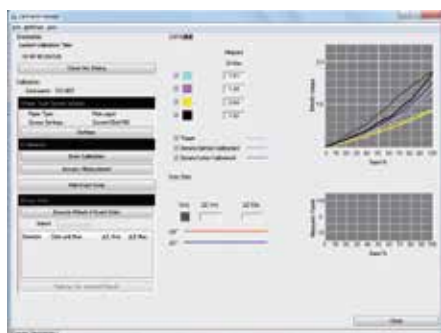
# Outstanding Operability

Compared not only to flexography, but also liquid development and inkjet printers, AccurioLabel 230 ensures ease of maintenance. Tasks that take time on analogue machines such as colour adjustments can be performed with ease on a digital machine. The ability to perform operations simply by following on-screen instructions makes it possible to operate the machine with little time needed for training.

Colour Management Utility

## Color Centro

Equipped with colour management software as standard, allowing operation, editing and setting for colour correction, colour profile creation, etc. that best suits the digital press used.



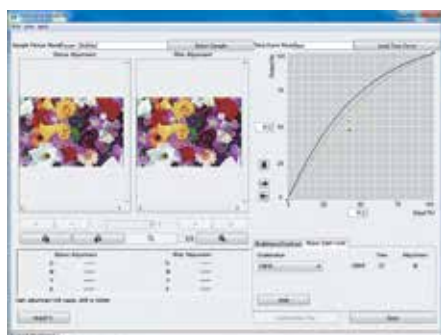
### Calibration

Screen to implement calibration. Calibration accuracy can also be checked on the same screen.



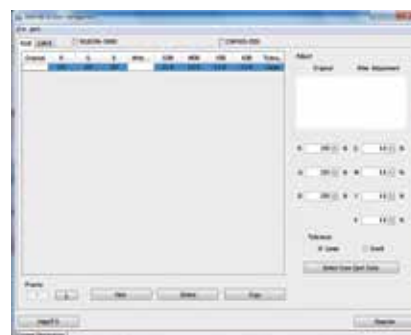
### Spot colour editing

A function to set special colours designated by the user. Capable of registering colours directly by selection from the colour chart.



### Tone curve adjustment

A function to allow effortless adjustment of contrast and brightness according to preference.



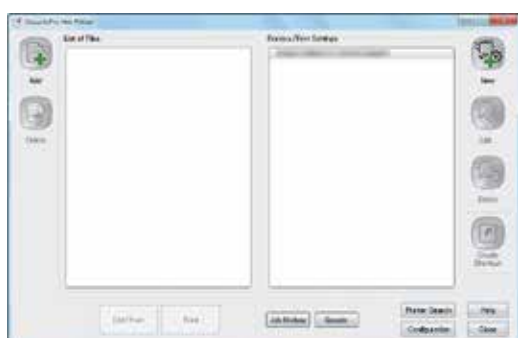
### Colour replacement

A function to replace selected colours with others.

Simplified printing operation

## AccurioPro Hot Folder

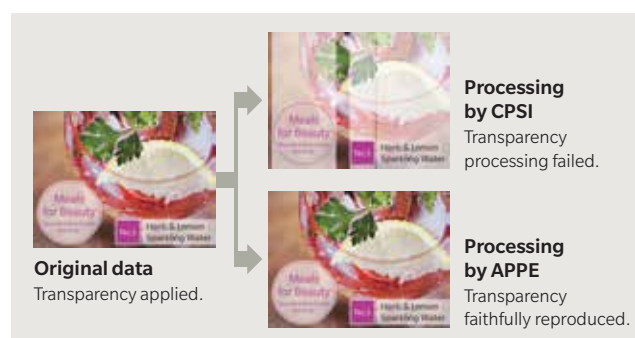
AccurioPro Hot Folder allows you to directly print a PDF or TIFF file without starting an application. You can also preset the job settings and reduce the burden of making print settings.

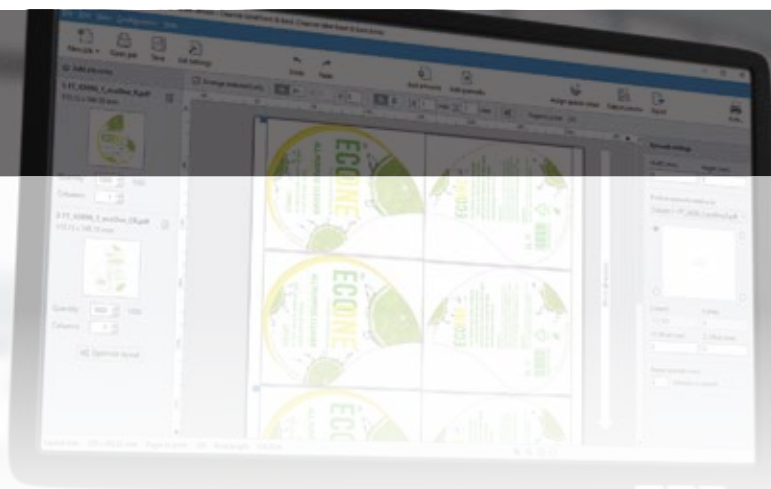


Equipped with the latest Adobe PDF Print Engine

## APPE 4.6

Equipped with Adobe genuine APPE 4.6. Capability of directly printing PDF files without using the print driver enables faithful reproduction of transparency. Optional UK-218 (APPE kit) required.

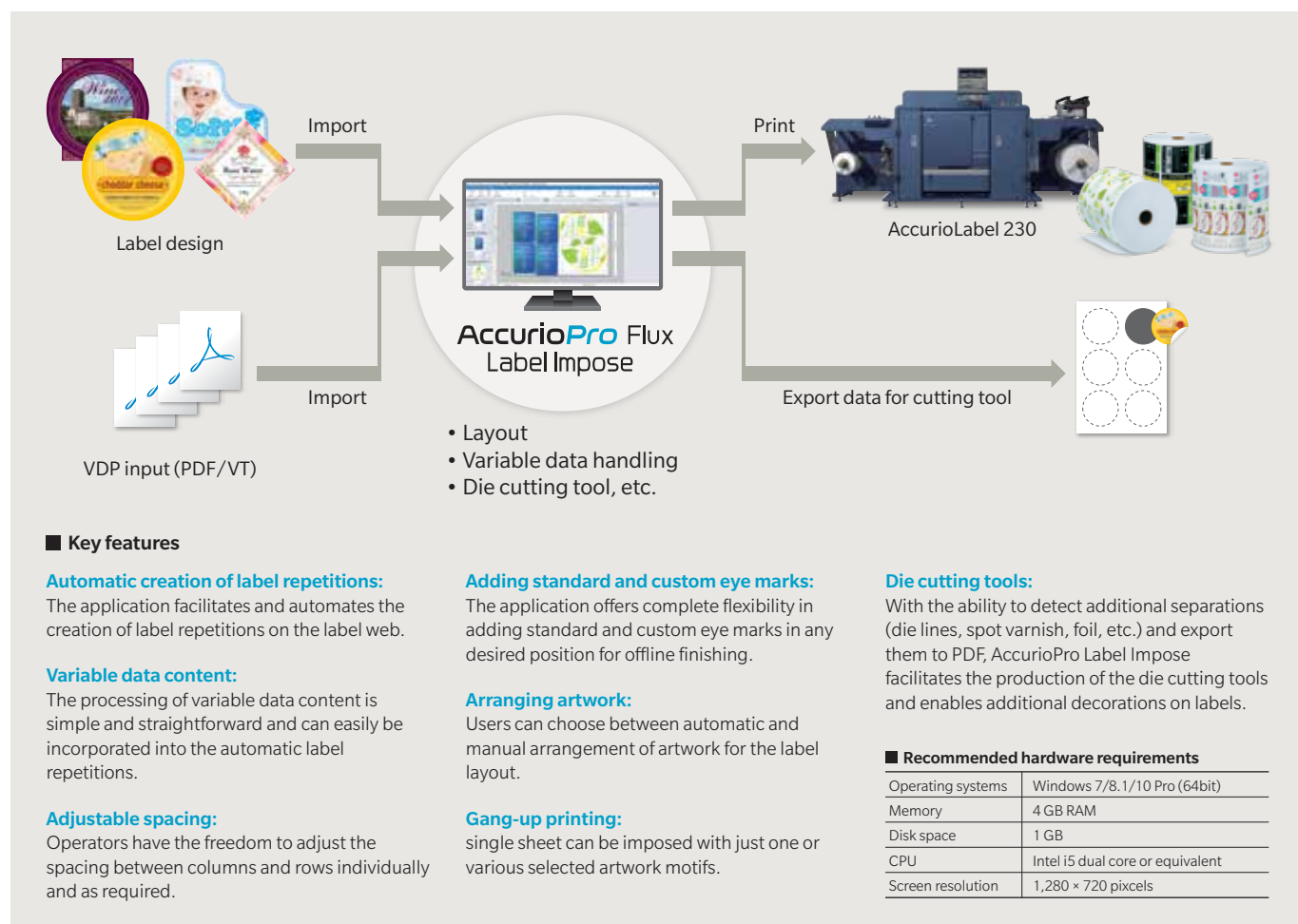




Indispensable tool for automated label printing

## AccurioPro Flux Label Impose

The AccurioPro Flux Label Impose software tool provides the perfect solution. The application not only gives operators a simple and intuitive interface to automatically impose and prepare label jobs for printing. At the same time, the software also enables users to create PDFs as basis for the corresponding cutting tools on the die cutting equipment. Working seamlessly with the AccurioLabel 230, AccurioPro Flux Label Impose perfectly complements Konica Minolta's label press!

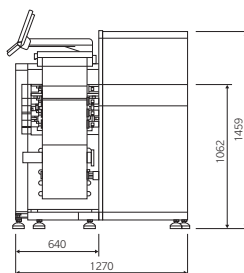
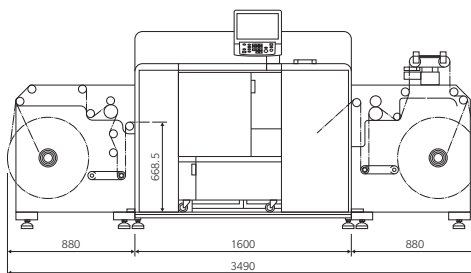
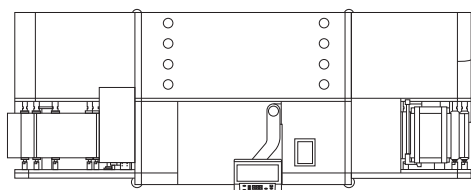




## Major specifications for AccurioLabel 230 (Printer main body only)

<b>Type</b>	Console
<b>Print method</b>	Dry-toner electrophotography
<b>Colour support</b>	Full colour (CMYK)
<b>Printing resolution/gradation</b>	3600 dpi (equivalent) × 1200 dpi / 8 bit
<b>Printing image size</b>	90 × 115 to 320 × 1,195 mm
<b>Paper width</b>	250 to 330.2 mm
<b>Paper thickness range</b>	81 to 256 gsm (80 to 250 µm)
<b>Print media</b>	Non-tack paper (81 to 176 gsm) Tack paper (136 to 256 gsm) Tack coated paper G/M (136 to 256 gsm) Tack Synthetic paper (136 to 176 gsm) Tack PP (136 to 176 gsm) Tack PET (136 to 216 gsm)
<b>Print speed</b>	<b>Speed range</b> Max.: 23.4 m/min. (76 fpm) High: 18.9 m/min. (62 fpm) Middle: 13.5 m/min. (44 fpm) Low: 9.45 m/min. (31 fpm)
	<b>By media weight</b> 81 to 176 gsm: Max. 23.4 m/min. 177 to 256 gsm: Max. 18.9 m/min.
<b>Compatible file formats</b>	PS, PDF (APPE supported), 8 bit TIFF
<b>VDP file format PPML, PDF-VT</b>	
<b>Power source (Single phase)</b>	Metric: 220 to 240 V 50/60 Hz, 25 A Inch: 208 to 240 V 60 Hz, 24 A
<b>Max. power consumption</b>	Metric: 6,000 W, Inch: 5,760 W
<b>Dimensions (W × D × H)</b>	1,200 × 903 × 1,478 mm
<b>Weight</b>	292 kg

\* Specifications and features of the delivered product are subject to changes.



## Major Specifications for Unwinder/Winder unit DP330

<b>Maximum roll size</b>	Ø 600mm
<b>Power requirements</b>	3 phase 380V, 20A, 50/60Hz
<b>Print media</b>	Paper: Tack paper, Non-tack paper Film: Tack film (Synthetic paper, PP, PET), etc.
<b>Dimensions (W × D × H)</b>	3,550 × 2,470 × 1,540 mm
<b>Weight</b>	Winding Unit: approx. 423kg Unwinding Unit: approx. 446 kg Platform: approx. 335 kg

## Specifications for embedded controller

<b>Type</b>	Embedded (AIO) type Equivalent to IC-605B with UK-104
<b>CPU</b>	Intel Core i5 4570S 2.9 GHz (CPU in printer)
<b>Memory</b>	System Memory 16 GB
<b>HDD</b>	1 TB × 3 + 500 GB × 1
<b>Network</b>	10/100/1000 Base-T
<b>PDL Language</b>	PostScript 3 (CPSI 3020), PDF Ver.1.7, TIFF Ver.6 Compliant, PPML Ver.2.2, PCL5c equivalent, PCL XL (PCL6 Ver.3) equivalent, APPE Ver.4.6 <sup>*1</sup> , PDF/VT Ver.2 <sup>*1</sup>
<b>Protocol</b>	TCP/IP, NetBEUI, IPP, WSD, SMB, Bonjour
<b>OS applicable</b>	Windows 7, 8.1, 10 Windows Server 2008/R2, 2012/R2, 2016, 2019 (Includes 64 bit versions) Mac OS X 10.9, 10.10, 10.11, 10.12, 10.13, 10.14
<b>Main fonts</b>	Adobe 136 fonts, PCL80 fonts
<b>Driver</b>	PS Plugin driver
<b>Konica Minolta applications applicable</b>	PS Web Connection, PS Net care Device Manager, Color Centro, AccurioPro Hot Folder

\*1 UK-218 (Option) required

## Konica Minolta Business Solutions Asia Pte Ltd

10 Teban Gardens Crescent  
Singapore 608923  
Tel: +65 6895 8595  
Fax: +65 6561 9879  
Email: sales@konicaminolta.sg  
www.konicaminolta.com

## PRESENCE IN THE REGION

BANGLADESH . BRUNEI . CAMBODIA . INDONESIA . LAOS . MALAYSIA . MAURITIUS . MYANMAR . PHILIPPINES . SINGAPORE . SRI LANKA . THAILAND . VIETNAM

## About Konica Minolta Business Solutions Asia

Konica Minolta Business Solutions Asia, based in Singapore, is a wholly owned subsidiary of Konica Minolta Inc., Tokyo, Japan. With its expertise in imaging, data processing and data-based decision making, Konica Minolta creates relevant solutions for its customers and solves issues faced by society.

As a digital workplace solution provider, Konica Minolta helps its clients to identify and unlock the potential digitalisation to help companies reach the next level in the digital maturity of their organisation by rethinking the workplace.

Konica Minolta's Igniting Print Possibilities offering helps printers, converters and brand owners maximize workflow automation to increase efficiency. The company delivers consultancy in all communication matters as well as top-of-the-line production, packaging and label printers. Its finishing devices create print products that stand out and create added value. Konica Minolta has established itself as the production printing market leader for more than a decade (InfoSource).

With its commitment to the Sustainable Development Goals (SDGs), Konica Minolta has pledged to consistently pursue its sustainability and social responsibility goals. The company has been repeatedly recognized for its rich history of social contribution as well as for working towards achieving the SDGs throughout its business and is listed among "2021 Global 100 Most Sustainable Corporations in the World", also having received the highest level in EcoVadis Sustainability Ratings.

Worldwide, the company has over 43,000 employees and is operating in over 150 countries.

Our organisation is certified according to ISO27001, ISO9001, ISO14001 and ISO13485 standards.



Please scan for more  
information on  
AccurioLabel 230

